

Release Decisions, Reentry and Effective Supervision



National Association of Sentencing Commissions Annual Conference

Jesse Jannetta
Research Associate

Baltimore, MD
August 4, 2009



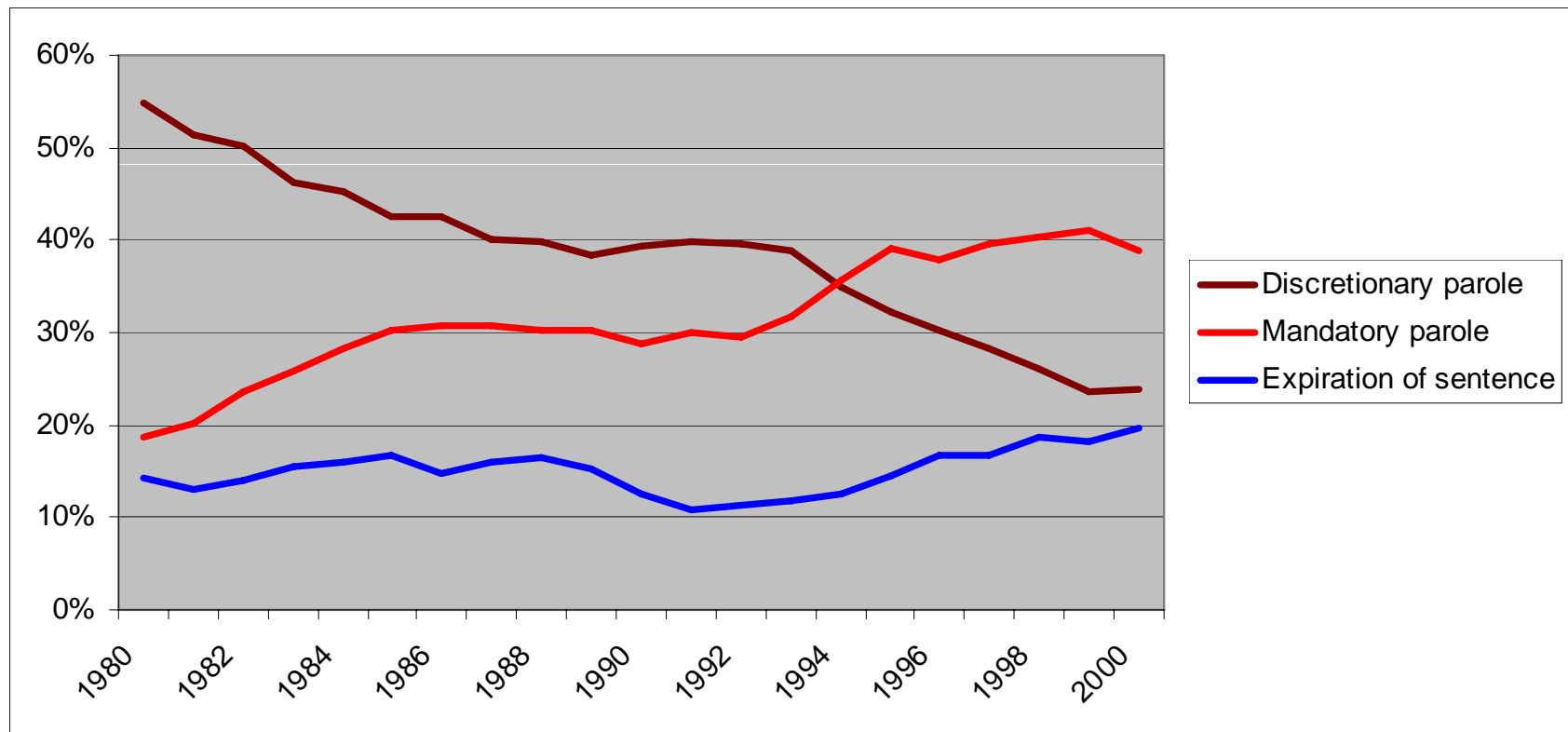
Presentation Oriented Around Two Broad Questions

1. How do release decisions fit within a comprehensive framework for reentry?
2. How can release decisions facilitate effective post-release supervision?

Synthesizing three bases of knowledge

- UI's foundational work on prisoner reentry
- UI's recent work on parole supervision strategies
 - *Putting Public Safety First*
 - 2008 Parole Practices Survey
- UI's role evaluating the Transition from Prison to Community (TPC) initiative

Release Type Profile Has Changed



Source: Bureau of Justice Statistics

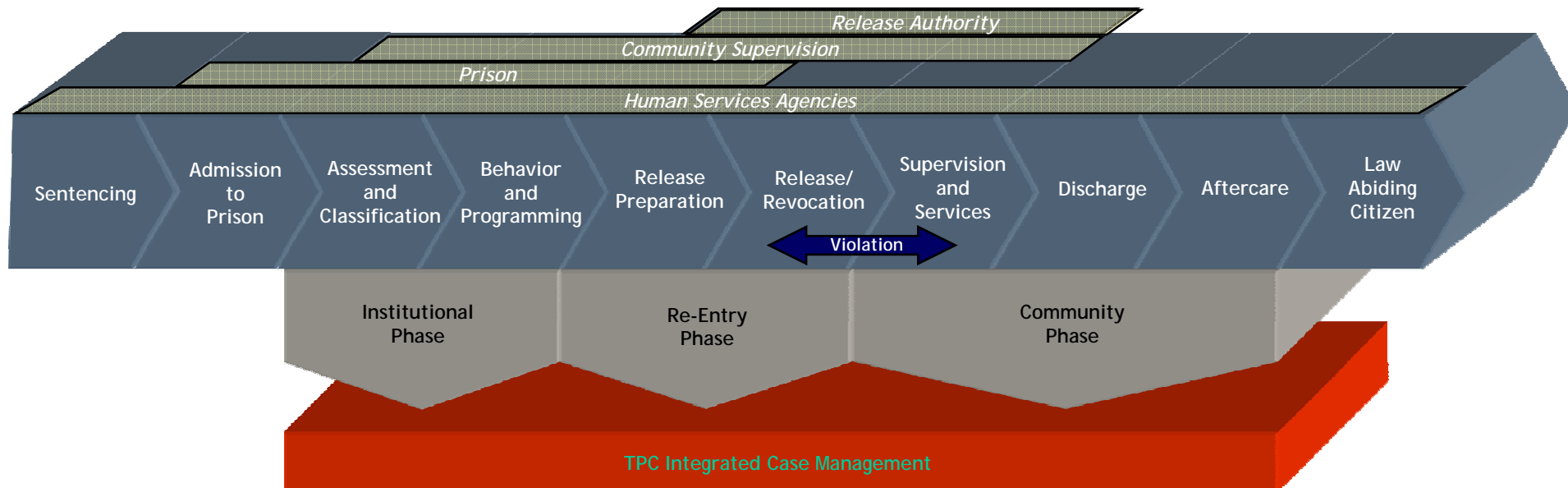


Changing Focus from Programs to Systems

- Solid research base on program/intervention effectiveness
 - “What Works” literature
- Systems approaches needed to realize large scale changes in outcomes
 - Matching right person to right intervention
 - Seamless transition from prison to community
 - Planning to sequence interventions
 - Providing incentives and enhancing motivation to change

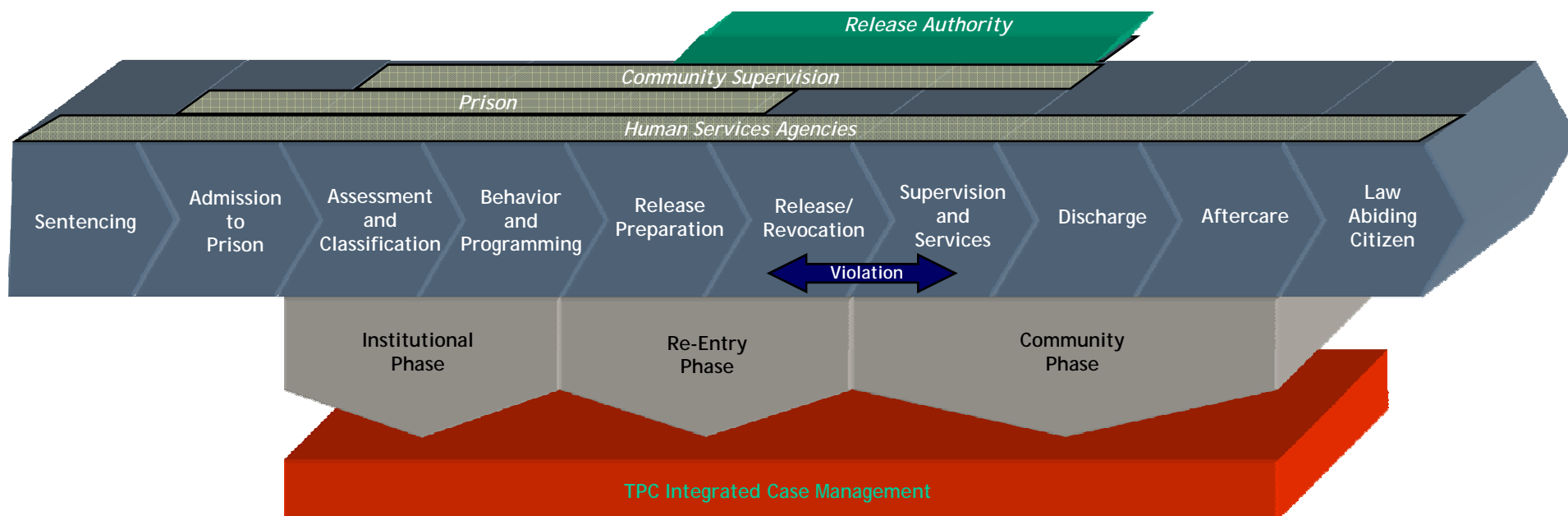
The TPC Model


Transition From Prison to Community



The TPC Model

Transition From Prison to Community





Releasing Authorities Can Be Part of a Behavior Change System

- Corrections is extremely fragmented in most states
- TPC and the *Putting Public Safety First* assume a focus on changing behavior to reduce recidivism
- Common sense of purpose is vital across:
 - Institutional corrections
 - Releasing authority
 - Post-release supervision agency



13 Parole Supervision Strategies to Enhance Reentry Outcomes

Organizational-Level Strategies

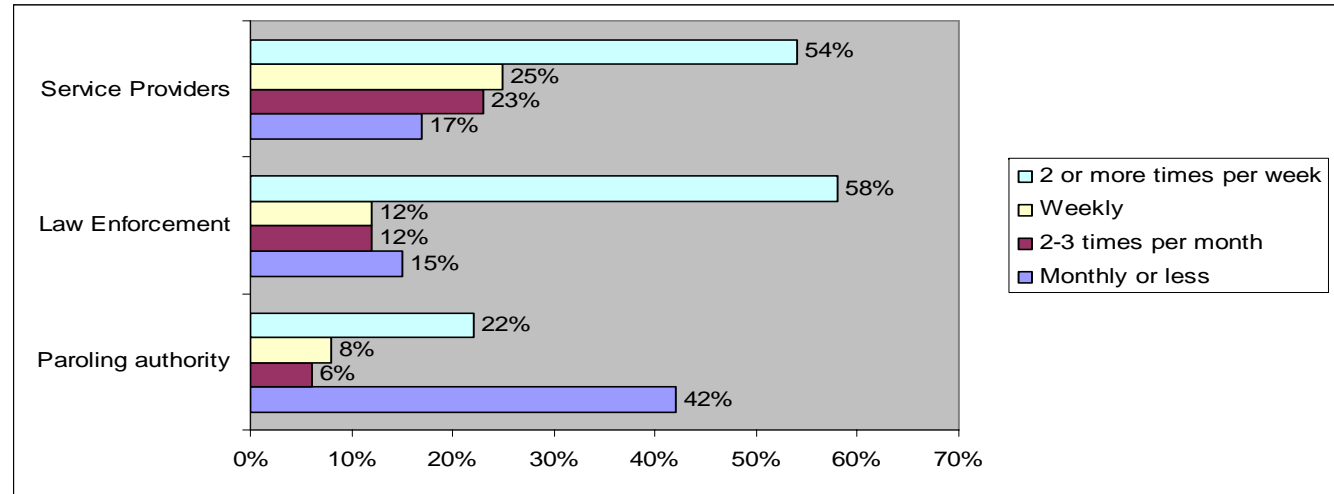
1. Define success as recidivism reduction and measure performance
2. Tailor conditions of supervision
3. Focus resources on moderate and high-risk parolees
4. Front-load supervision resources
5. Implement earned discharge
6. Implement place-based supervision
7. Engage partners to expand intervention capacities

Individual-Level Strategies

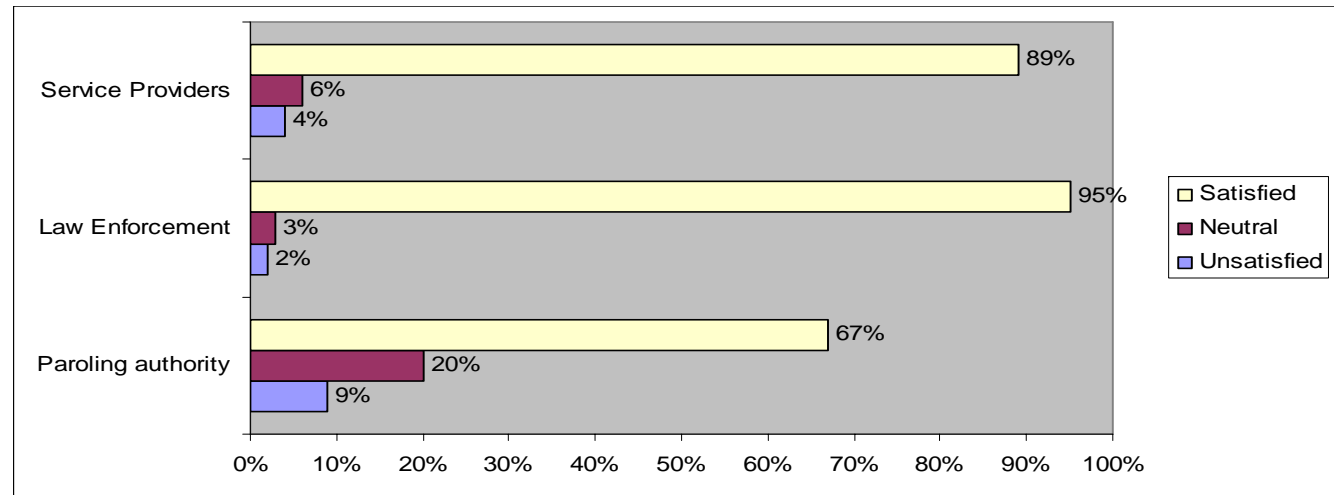
8. Assess criminogenic risk and need factors
9. Develop supervision case plans that balance surveillance and treatment
10. Involve parolees to enhance their engagement in assessment, case planning, and supervision
11. Engage informal social controls to facilitate community reintegration
12. Incorporate incentives and rewards into the supervision process
13. Employ graduated problem-solving responses to violations of parole conditions in a swift and certain manner

Partnership with Parole Supervision Could Be Stronger

Parole Administrator Contact w/Agencies Organizations



Parole Administrator Satisfaction w/Agencies Organizations





Releasing Authorities and Organization-Level Strategies

- Focus resources on moderate and high-risk parolees
 - Who gets supervised
 - Who gets matched to what interventions
- Tailor conditions of supervision
 - Realistic, relevant, and research-based
 - Half of parole offices report conditions regularly tailored
 - 55% report responsibility for setting/modifying conditions
- Implement earned discharge
 - Behavioral contract
 - Discharge from both prison and parole can be earned



Releasing Authorities and Individual-Level Strategies

- Assess criminogenic risk and needs factors
 - Key information for population risk management
- Supervision case plans balancing surveillance and treatment
 - 15% of parole offices report paroling authority has responsibility for developing reentry plans
- Employ graduated, problem-solving responses to violations
 - 18% of parole offices report that the paroling authority determines sanctions



Releasing Authorities Can Push Evidence-Based Practice

- Understanding your population/context/environment
- Using what works and refusing to use what doesn't work
- Commitment to determining whether what you're doing is working
- Decision-makers requiring evidence is what institutionalizes EBP



Do Systematic Approaches to Reentry Work?

- TPC outcomes
 - **Missouri**—Decreasing rates of recidivism (return to prison) 6 and 12 month follow-ups (23% down to 15%, 37% down to 30%)
 - **Georgia**—Upward trend in successful completions of parole 2005-2007 (66% up to 71%)
 - **Michigan**--MPRI outcomes through August 2007 -- 26% improvement in total returns to prison (net 400 fewer returns to prison)
- Proactive Community Supervision in Maryland
 - Regardless of criminal history and risk level, rates of rearrest and warrants filed for TVs significantly lower for parolees supervised under PCS strategy



Does Release Discretion Matter?

- Solomon et al. (2005): Mandatory parolees fare no better on supervision than similar prisoners released without supervision
 - Releases by parole board were 4 percentage points less likely to be re-arrested
- Discretionary release is a powerful incentive
- Reentry models are generally designed to accommodate either kind of release



Resources

- Transition from Prison to Community Reentry Handbook: <http://www.nicic.gov/Library/022669>
- Putting Public Safety First
 - Report: http://www.urban.org/UploadedPDF/411791_public_safety_first.pdf
 - Brief: http://www.pewcenteronthestates.org/report_detail.aspx?id=46538
- UI on Reentry: <http://www.urban.org/justice/index.cfm>



Contact

Jesse Jannetta

Research Associate

202-261-5593

jjannetta@urban.org

www.urban.org