



SENTENCING SNAPSHOT

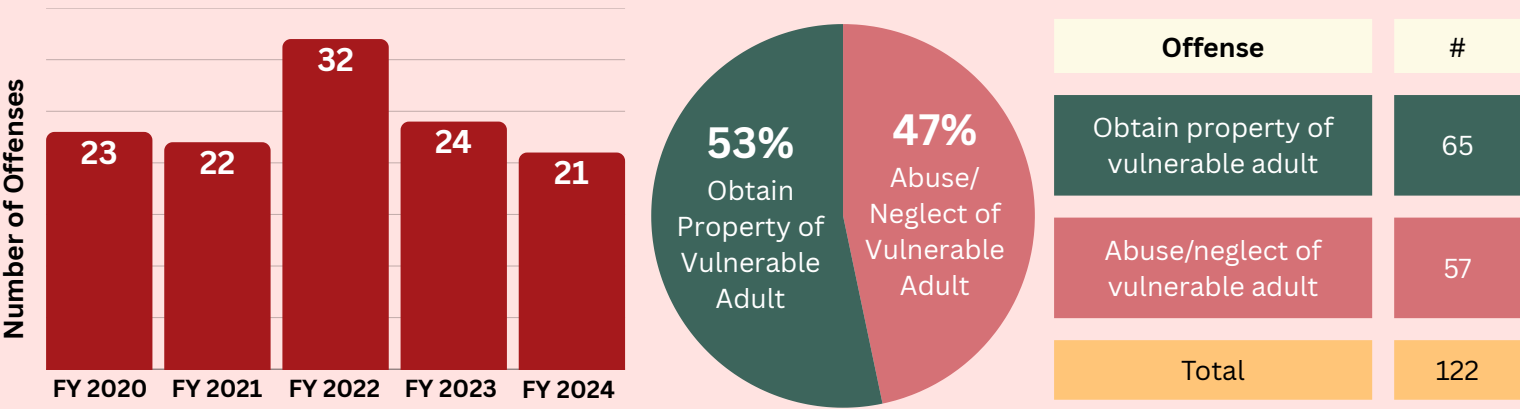


ISSUE 14—JULY 2025

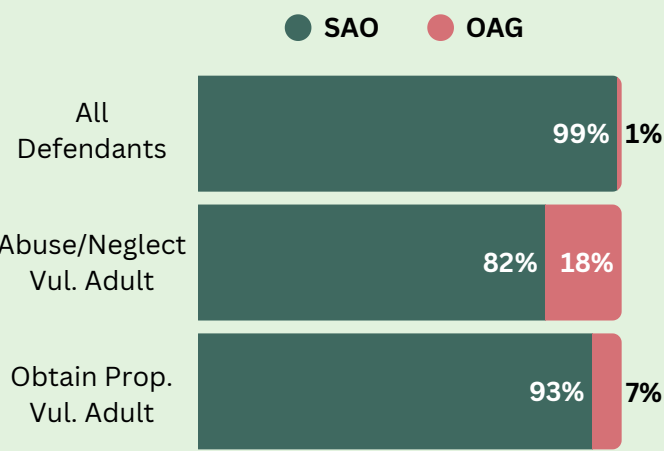
OFFENSES INVOLVING VULNERABLE ADULTS, SENTENCED IN MARYLAND CIRCUIT COURTS, FY 2020 - FY 2024

This Sentencing Snapshot explores sentences for offenses involving vulnerable adults, sentenced in Maryland circuit courts from fiscal year (FY) 2020 through FY 2024. Additional information, including methodology, may be found on the [MSCCSP website](https://www.msccsp.org).

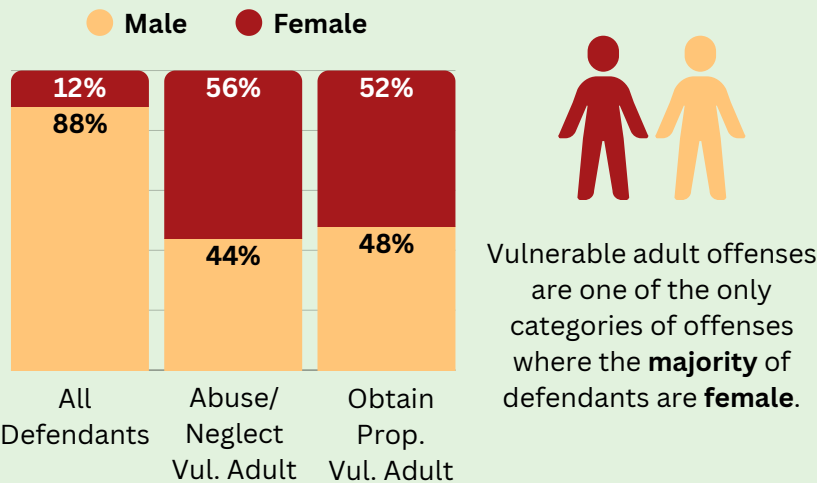
OFFENSES INVOLVING VULNERABLE ADULTS



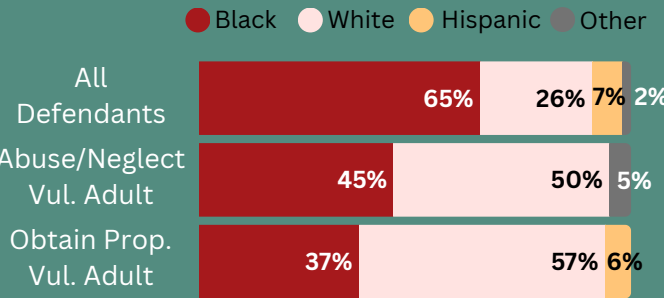
PROSECUTING OFFICE



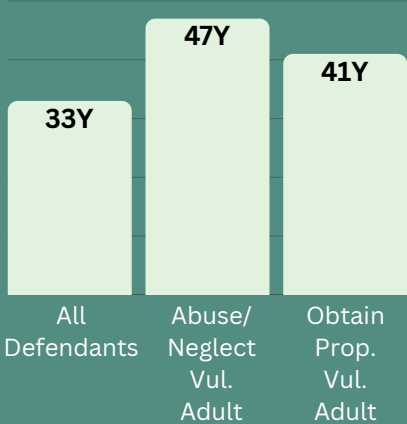
SEX



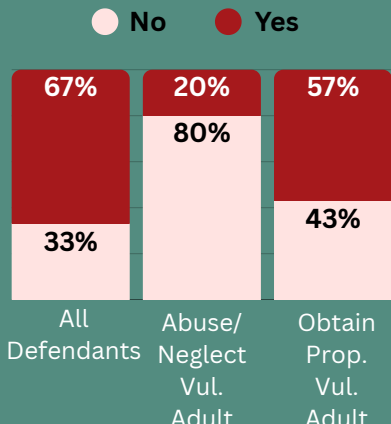
RACE



MEAN AGE

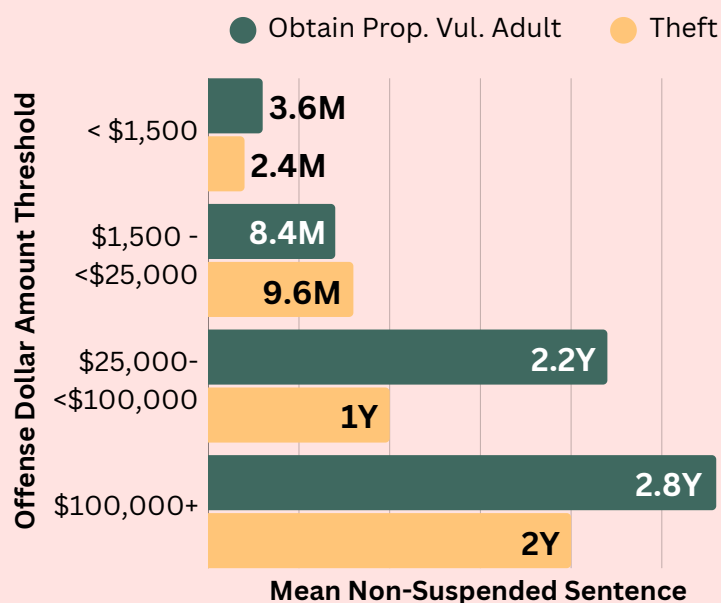


PRIOR CRIMINAL RECORD



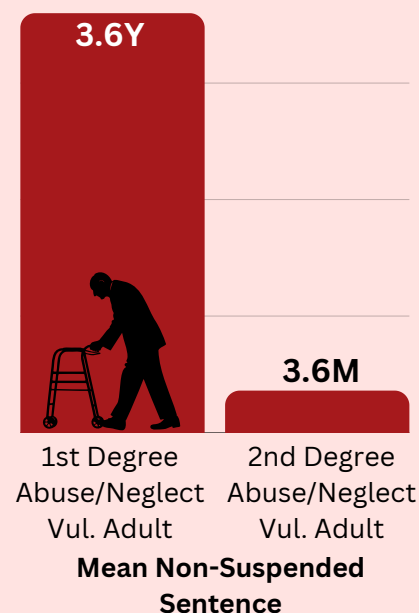
Individuals sentenced for offenses involving vulnerable adults are more likely than individuals sentenced for other offenses to be **white**, **older**, and have **no prior adult criminal record**.

SENTENCES FOR GUIDELINES-ELIGIBLE OFFENSES INVOLVING VULNERABLE ADULTS, SENTENCED IN MARYLAND CIRCUIT COURTS, FY 2020 - FY 2024

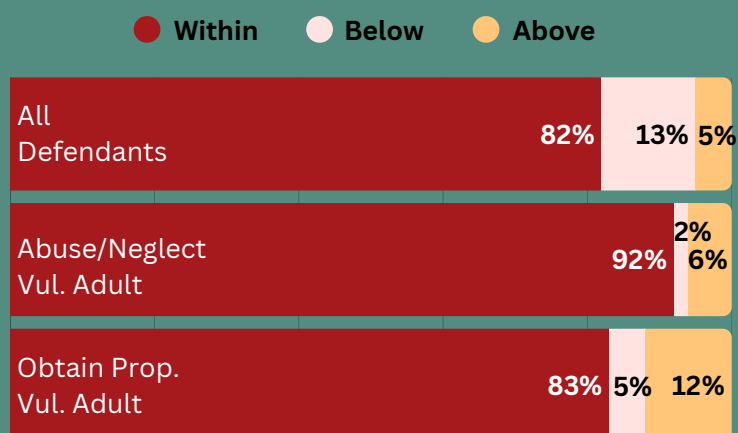


72%
Incarceration rate for obtaining property of a vulnerable adult

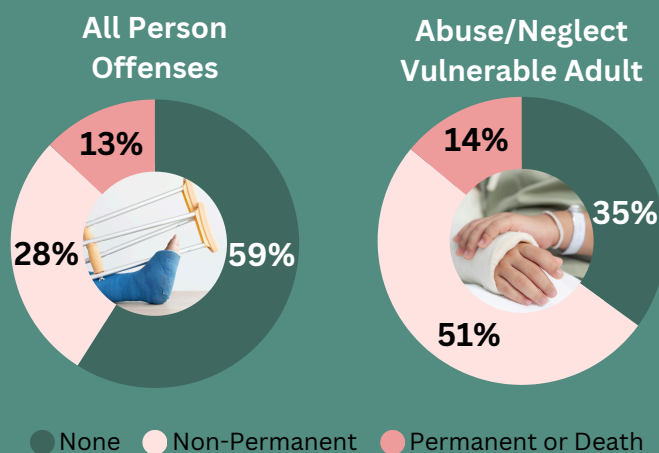
65%
Incarceration rate for abuse/neglect of a vulnerable adult



COMPLIANCE

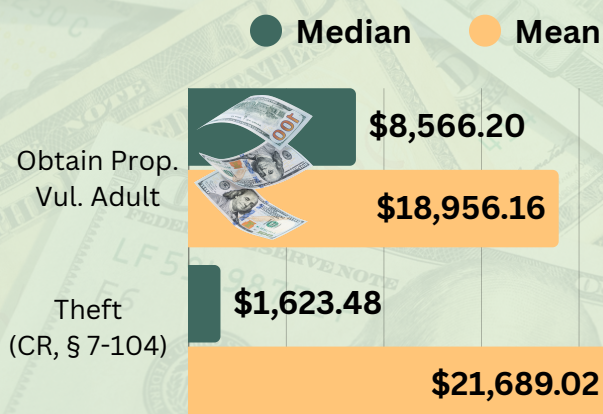


VICTIM INJURY



ECONOMIC LOSS

Reported Economic Loss, FY 2020-2024



The fact that the mean economic loss is larger than the median indicates that a few extremely large loss amounts increase the mean above the median.

Total Reported Economic Loss for All Offenses Involving Vulnerable Adults, by Fiscal Year

